

MOVE 5000

The perfect business companion for in-door and outdoor mobile businesses

YORKSHIRE PAYMENTS
STRAIGHT TALKING CARD SOLUTIONS

- ▶ Enhanced customer engagement on the shop floor
- ▶ Sleek design for high-end environments
- ▶ Intuitive interface for best-in-class user experience
- ▶ Never disconnect via automatic network switching

Designed for both indoor and outdoor use, the compact Move/5000 is the perfect business companion for hospitality, high street and small merchants, creating a seamless shopping experience that's free from the checkout.

Fast introduction with Telium TETRA OS

The Telium TETRA OS integrates with existing payment methods to ensure a seamless introduction into a business' payment environment. Merchants also have greater control over the payment experience that they're offering customers by utilising useful HTML5 applications.

Alternative payment methods

From mobile wallets to traditional payments schemes, Move/5000 has it covered. The Move/5000 contains payment hardware such as NFC couponing, chip & PIN, swipe and sign, contactless and more to facilitate the processing of alternative payment methods – including those enabled by camera, like QR codes.

Highest security

The Move/5000 is certified and fully compliant with the latest global and local PCI regulations. The Telium TETRA OS has been future-proofed with top-of-the-line cryptography software and Ingenico's world-class peer-to-peer encryption technology to keep data safe.

Maximized network availability

Even on the go, those using the Move/5000 terminal will have strong connections to the internet. That's because this terminal utilises a wide range of wireless connectivity options and automatic network switching between 4G, 3G, 2G, Dual SIM, Bluetooth and WiFi – all fully optimised so that connection will always be viable.

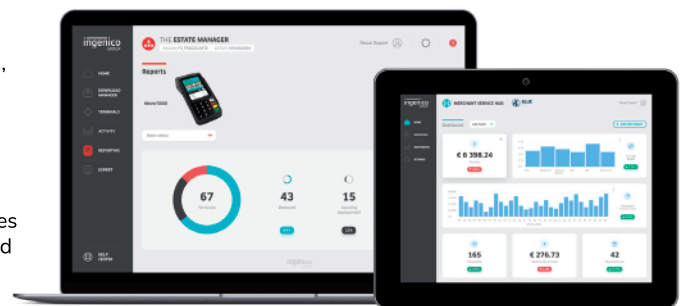
Optimal user-experience

This terminal is dynamic by design, and its intuitive user interface – including powerful multimedia capabilities and a large 3.5 inch colour touchscreen – creates an optimal experience for customers. Its new and ultra-responsive rubber keypad improves PIN entry for customers.

Compatible with Ingenico's suite of services

Keeping the solutions connected, the Move/5000 works in unison with Ingenico's supporting service platforms, meaning merchants will have access to business services such as back office reporting and e-receipt management. Software updates and day-to-day support deliver a hassle-free experience for those using this innovative range.

The Move/5000 is supported by our Cloud Services



www.yorkshirepayments.co.uk
01422 323785

©Yorkshire Payments 2022

YORKSHIRE PAYMENTS
STRAIGHT TALKING CARD SOLUTIONS

SPECIFICATIONS

Processor	<ul style="list-style-type: none"> • Application & Crypto processor 	<ul style="list-style-type: none"> • Cortex A5 	
Memory	<ul style="list-style-type: none"> • Internal • External 	<ul style="list-style-type: none"> • 512 MB Flash, 512 MB RAM • MicroSD up to 32GB 	
OS		<ul style="list-style-type: none"> • Telium TETRA 	
SIM		<ul style="list-style-type: none"> • 1 SIM • 2 SIM 	Option
SAM		<ul style="list-style-type: none"> • 2 SAM • 3 SAM 	Option
Card readers	<ul style="list-style-type: none"> • Magstripe • Smart card • NFC/Contactless 	<ul style="list-style-type: none"> • ISO 1/2/3, 500K lifespan • EMV Level 1, 500K lifespan • EMV Level 1 compliant 	
Data capture	<ul style="list-style-type: none"> • Positioning • Barcode reader • Camera 	<ul style="list-style-type: none"> • GPS tracking • 1D/2D • 5M pixels autofocus 	Option Option Option
Display	<ul style="list-style-type: none"> • Colour 	<ul style="list-style-type: none"> • 3.5" backlit, HVGA (480x320 pixels) 	
Touchscreen	<ul style="list-style-type: none"> • Resistive • Capacitive 		Option
Keypad		<ul style="list-style-type: none"> • 16 keys, raised marking, backlit 	
Audio	<ul style="list-style-type: none"> • Buzzer • Speaker • Audio Jack 	<ul style="list-style-type: none"> • Mono • Stereo 	Option Option
Video	<ul style="list-style-type: none"> • Video accelerator 	<ul style="list-style-type: none"> • H264 codec 	

SPECIFICATIONS

Thermal Printer	<ul style="list-style-type: none"> • Speed in lines/s • Paper roll cage 	<ul style="list-style-type: none"> • up to 30 lines/s • 58 mm width x Ø 40 mm • 58 mm width x Ø 25 mm 	 Option
Terminal connectivity	<ul style="list-style-type: none"> • WAN • LAN • Multicom 	<ul style="list-style-type: none"> • 4G and/or 3G with fallback • WiFi and/or Bluetooth • WAN + LAN 	Option Option Option
Terminal connections	<ul style="list-style-type: none"> • USB • Power Supply 	<ul style="list-style-type: none"> • Host & Slave • Dedicated power Jack 	
Battery	<ul style="list-style-type: none"> • Li-ion 	<ul style="list-style-type: none"> • 2900mAh 	
Terminal size	<ul style="list-style-type: none"> • Ø 40 mm • Ø 25 mm 	<ul style="list-style-type: none"> • 169x78x57 mm (6.6x3.1x2.2") • 160x78x47 mm (6.3x3.1x1.9") 	
Weight	<ul style="list-style-type: none"> • Terminal + Battery 	<ul style="list-style-type: none"> • 320 g (11 oz) 	
Environment	<ul style="list-style-type: none"> • Operating Temperature • Storage Temperature • Operating Humidity 	<ul style="list-style-type: none"> • -10°C to +50°C (14°F to 122°F) • -20°C to +55°C (-4°F to 131°F) • 85% non-condensing at +40°C (104°F) 	
Accessory	<ul style="list-style-type: none"> • Privacy shield • Car Charger • Docking-station • Stylus Kit 	<ul style="list-style-type: none"> • Factory Mounted • Charger • 2 RS232 • USB Host • USB Slave • Modem • Ethernet 10/100 Base T • Bluetooth 	Option Option Option Option Option Option Option Option
Security		<ul style="list-style-type: none"> • PCI PTS 5.x online & offline certified 	